

**ITEM 8.                    TEMPORARY ROAD CLOSURES – BEAMS ART FESTIVAL 2014  
                                  CHIPPENDALE**

**FILE NO:                2014/292982**

**RECOMMENDATION**

It is recommended that the Committee endorse the temporary road closures for the Beams Arts Festival 2014, Chippendale from midnight on Friday 19 September 2014 to 1.30am on Sunday 21 September 2014, subject to the following conditions:

- (A) The Applicant must comply with the temporary road closure conditions as stipulated in Schedule B of this Agenda.
- (B) The Applicant must contact Redfern Police to discuss deployment of user pay police for the event.
- (C) The Applicant is to obtain a Road Occupancy Licence from the Transport Management Centre prior to commencement of works.
- (D) The Applicant must contact the City's Venue Management Unit to discuss the event.
- (E) The Applicant must provide a telephone number of the supervisor responsible for the proposed event and include contact details in the notification letters to be distributed to affected stakeholders.

**DECISION**

**BACKGROUND**

Chippendale Creative Precinct has applied for the temporary road closures of Wellington, O'Connor, Queen, Henrietta, Balfour, Dick and Little Queen Streets and Teggs Lane from midnight on Friday 19 September 2014 to 1.30am on Sunday 21 September 2014.

**COMMENTS**

The Beams Art Festival is an annual event that requires the closure of City streets and traffic detours around the event area.

The event has been created to draw together artists, performers, creative industries, eateries and galleries of the area, celebrating its history and future. Ideas of community, relationships, sustainability and creativity are central to the Beams Arts Festival.

The event will occur between 5pm and 10pm on Saturday 20 September 2014.

However no vehicles will be allowed into the event area from midnight on Friday 19 September 2014 to 1.30am on Sunday 21 September 2014 to allow for bump-in and bump-out operations.

The Applicant has provided a site-specific Traffic Control Plan that includes details of barricades, signs, flagmen and other traffic devices to implement the proposed road closures.

**Temporary Road Closures – Midnight on Friday 19 September 2014 to 1.30am on  
Sunday 21 September 2014**

Balfour Street between Meagher and Wellington Streets, Chippendale

Dick Street between Balfour and Abercrombie Streets, Chippendale

Wellington Street between Regent and Balfour Streets, Chippendale

O'Connor Street between Balfour and Abercrombie Streets, Chippendale

Queen Street between Chippen and Balfour Streets, Chippendale

Henrietta Street between Chippen and Balfour Streets, Chippendale

Little Queen Street between Balfour and Abercrombie Streets, Chippendale

Teggs Lane between Balfour and Abercrombie Streets, Chippendale

There are currently no other approved temporary road closures proposed to take place on the same day in close proximity of these closures.

The City has not received any complaints about previously events.

The temporary road closures will not affect any other properties as local access will be provided at all times and alternative access routes are available nearby.

**CONSULTATION**

The Applicant will be required to notify affected stakeholders as stipulated in Schedule B.

**FINANCIAL**

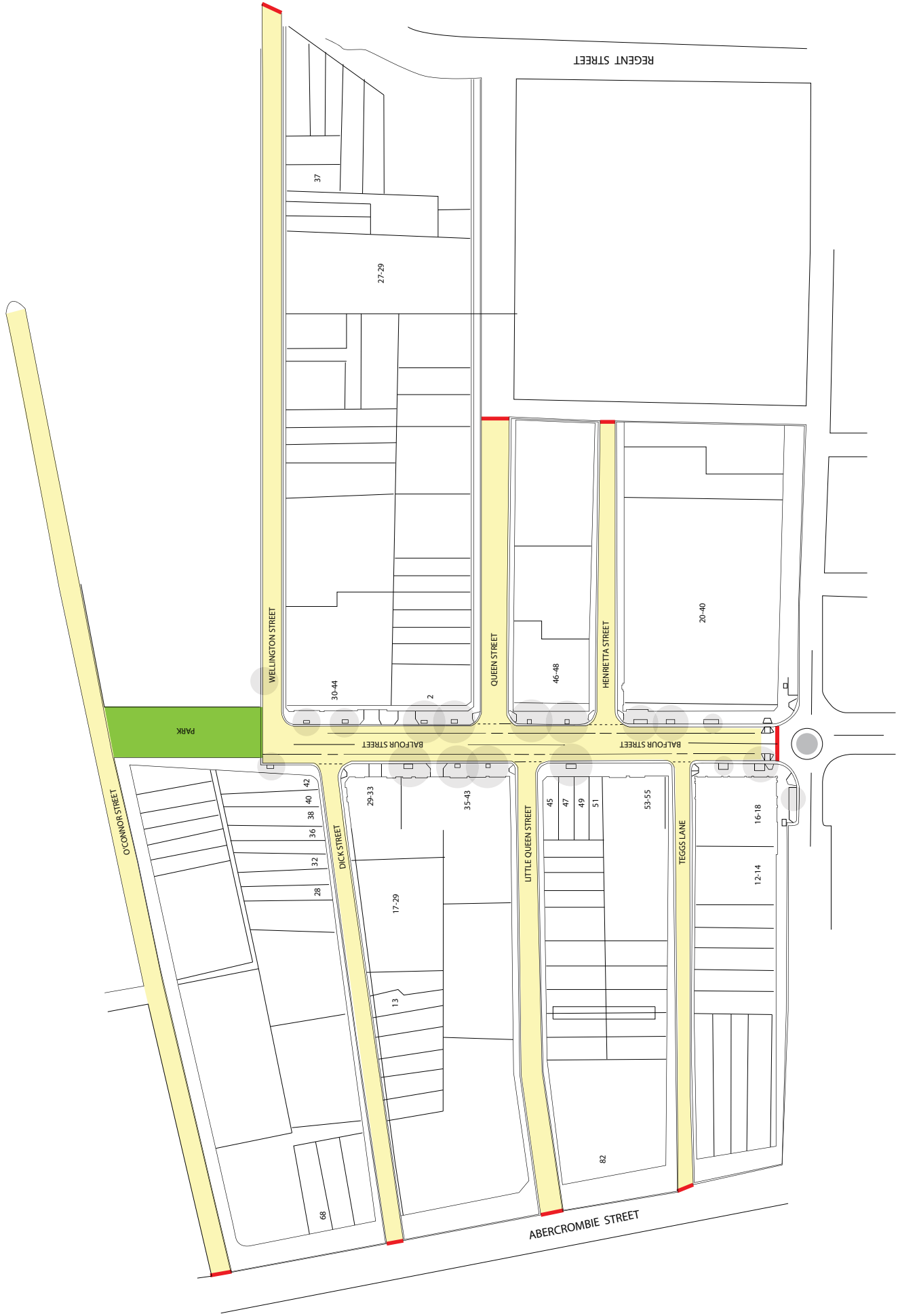
All costs associated with the proposed closures will be borne by the Applicant.

**ATTACHMENTS**

Street Events - Temporary Road Closures – Beams Arts Festival 2014 Chippendale

Joseph Gomes, Area Traffic Engineer

# BEAMS ARTS FESTIVAL 2014



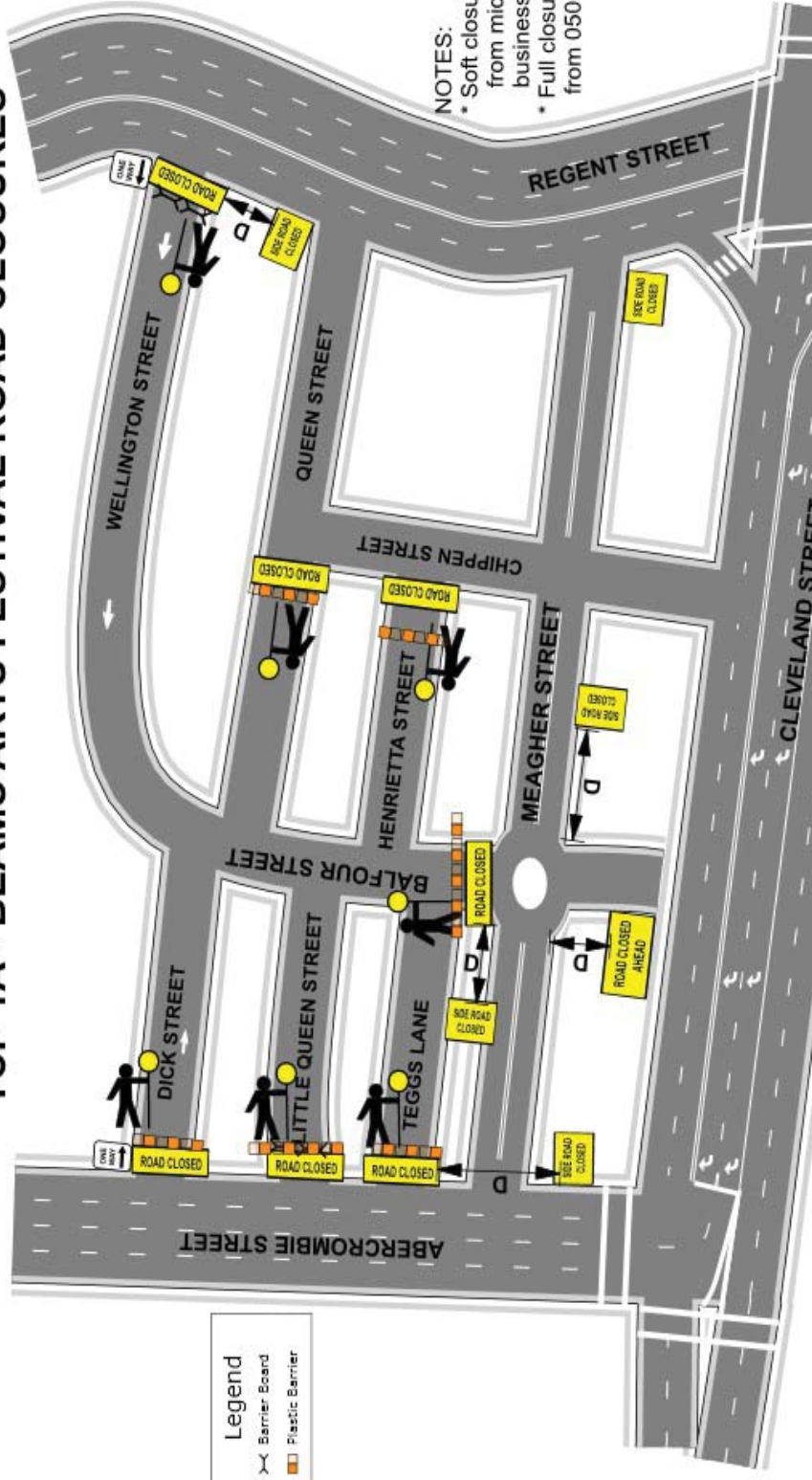
2014 STREET EVENT SPACE

PARK EVENT SPACE

ROAD CLOSURE POINTS

# TCP 1A - BEAMS ARTS FESTIVAL ROAD CLOSURES

www.invarion.com



**Legend**

- Barrier Board
- Plastic Barrier

**NOTES:**

- Soft closure implemented from midnight (residents & businesses only)
- Full closure implemented from 0500am - 0130am

**Date:** 20 September 2014 **Author:** Scott McMichael - 4163010498 **Project:** Beams Arts Festival Chippendale

**TCP:** 1A

**Comments:**

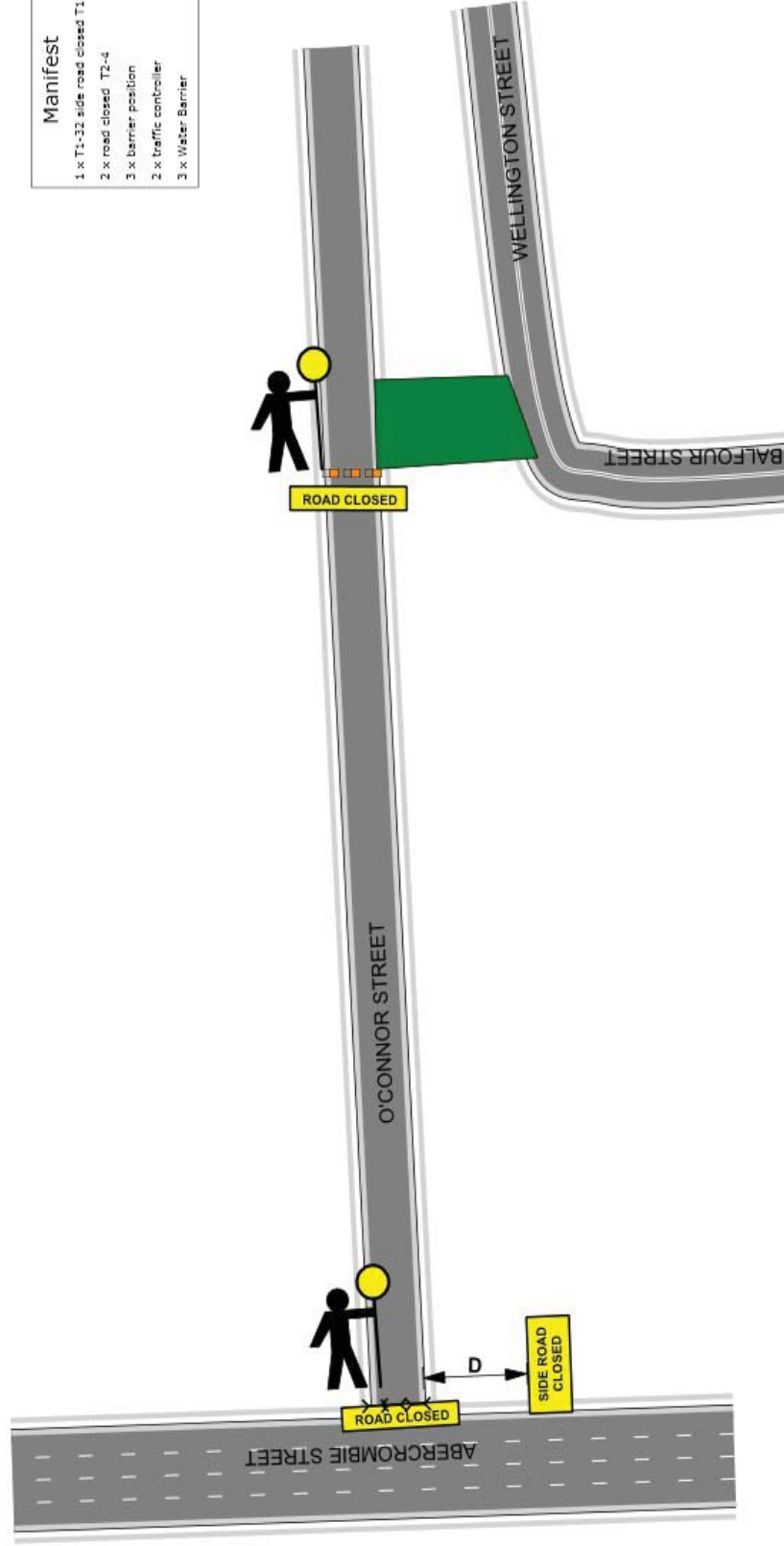
- \* Traffic Controllers on duty at all times on road closures.
- \* One Way Streets are to be managed by user pays Police - unless control handed over to Traffic Control Supplier.
- \* Event infrastructure must be able to be removed to allow for emergency vehicle access if needed.
- \* Any changes to approved TCP's due to event structures outside of existing TCP will occur additional charges.

**Manifest**

- 1 x road closed ahead T2-Q02a T2-Q02a
- 7 x road closed T2-4
- 5 x T1-32 side road closed T1-32
- 4 x Barrier Board
- 7 x traffic controller
- 17 x Plastic Barrier

# TCP 1B - ROAD CLOSURE O'CONNOR STREET

www.invarion.com



**Manifest**  
 1 x T1-32 side road closed T1-32  
 2 x road closed T2-4  
 3 x barrier position  
 2 x traffic controller  
 3 x Water Barrier

	<p><b>Date:</b> 20 September 2014 <b>Author:</b> Scott McMichael - 4163010498 <b>Project:</b> Beams Arts Festival Chippendale</p> <p><b>TCP:</b> 1B</p> <p><b>Comments:</b></p> <ul style="list-style-type: none"> <li>* Traffic Controllers on duty at all times on road closures.</li> <li>* One Way Streets are to be managed by user pays Police</li> <li>- unless control handed over to Traffic Control Supplier.</li> <li>* Event infrastructure must be able to be removed to allow for emergency vehicle access if needed.</li> <li>* Any changes to approved TCP's due to event structures outside of existing TCP will occur additional charges.</li> </ul>
--	------------------------------------------------------------------------------------------------------------------------------------------------------------------------------------------------------------------------------------------------------------------------------------------------------------------------------------------------------------------------------------------------------------------------------------------------------------------------------------------------------------------------------------------------------------------------------------------------------------------------------------------------------------------------

